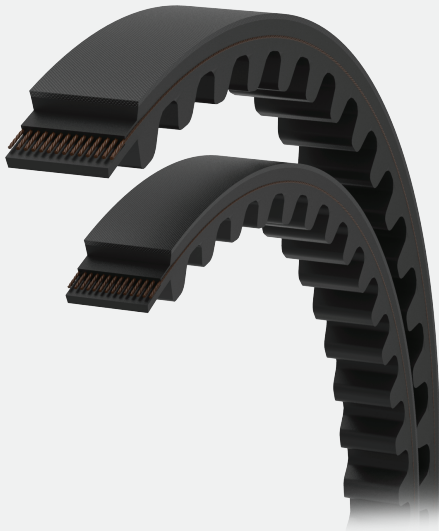


Automotive Drive Belts

Automotive And Truck Vee Belts

10A 11A 13A 15A 17A 19A 20A 22A

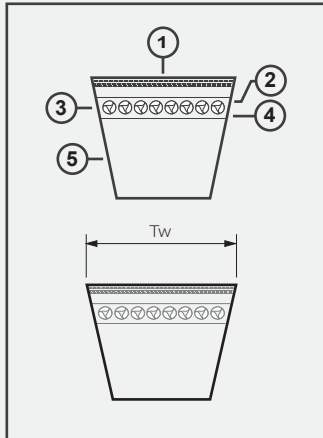


PRODUCT DESCRIPTION

The MITSUBA raw edge cog belt design construction is suitable in the engine of car, truck, and light commercial vehicle. The raw edge belt with moulded cog is distinguished by its high level of durability and its low stretch tension behaviour. Excellent Tooth design profile gives high flexibility and good fit with the pulley as well as lower operating temperature which increase belt life.

Key Benefits;

- * High efficiency
- * High level of durability
- * Excellent less elongation
- * Maintenance free



1. Top Fabric
2. Top Cushion Rubber
3. Tension Member
4. Adhesion Rubber
5. Compression Rubber

SECTION PROGRAM

Section	Top width [mm]	op [degree]	Length Range [mm]
10A	10.0		
11A	11.0		
13A	13.0		
15A	15.0	38±1	Full Range
17A	17.0		
19A	19.0		
20A	20.0		
22A	22.0		

Automotive Drive Belts
Automotive And Truck Vee Belts



 **MITSUBA®**